

PRODUCT DATA SHEET

AVM 95 / 400, AVM 112 / 500, AVM 125 / 610, AVM 160 / 500

DESIGN

Two-piece, halogen-free sleeve shells made of transparent and impact-resistant polycarbonate in a slim and symmetric form suitable as a branch or connection cable joint. The branch cable is placed parallel to the main cable. Easy assembly thanks to hinge technology and pre-punched foam seals with break-out rings that can be glued in place if required and can be adjusted to the cable diameter without tools. The cable joint is protected electrically and mechanically by casting with ecologically optimized casting compound ISO-PUR® K2000, thin casting compound ISO-PUR® K762, label-free casting compound ISO-CAST® BRH or training-free casting compound ISO-PUR® K2000H.

USE

Depending on their size, the branch and connection cable joints of type AVM can be used as transition cable joints from paper to plastic cables, as connection cable joint on paper or plastic cables, as repair cable joint, as double branch cable joint (double house interfacing) or for telecommunications applications.

TESTS

- DIN VDE 0278 part 3
- DIN VDE 0291 draft 6 / 97
- DIN VDE 0291 part 2
- DIN EN 50393 (VDE 0278-393)
- DIN EN 50655-1:2018-06
- E DIN EN 60455-3-8:2018-02
- prHD 631.1
- European standard HD 623S / 1.97
- KEMA - tested (10 m water pillar)
- Additional high current (short circuit) test (VEW - PA 003)
- Control of each batch acc. DIN / ISO 9001



Double house interfacing with AVM 125 / 610

ASSEMBLY

Branch and main cables are connected with common compression connectors or cable clamps. Due to their size, the versions AVM 125 / 610 and AVM 160 / 500 are also suitable for the use of compact clamping rings. The fully assembled cable joint is poured with cast resin through the large filling opening and closed with sliding covers. Fast filling of the cable ditch is possible due to the quick hardening of the casting compound.

DELIVERY

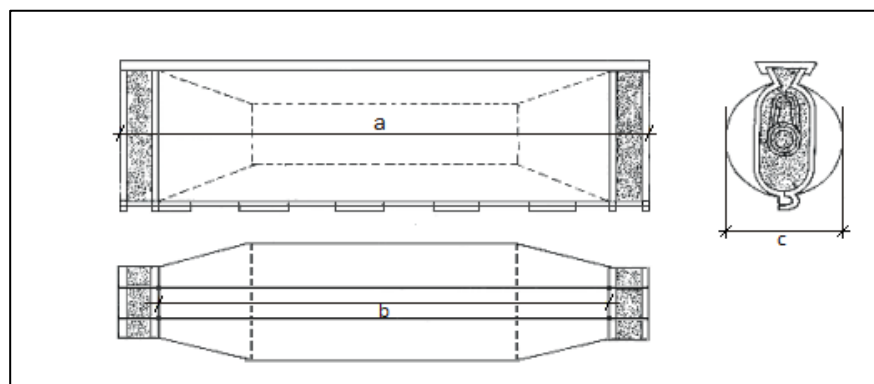
Sleeve shells, seals, wide sliding covers, auxiliary materials, cast resin, assembly instructions. On request, cast resin in cans or two-chamber bags.

ACCESSORIES (ON REQUEST)

Compact clamping rings, cable clamps, compression connectors, solderless grounding set.

DIMENSIONS OF CABLE CASES AND EXAMPLES OF SUITABLE CABLE/JOINT COMBINATIONS

Cable joint type c / a	Outside length a (mm)	Inside length b (mm)	Max. diameter c (mm)	Volume (ltr.)	Max. diameter main / branch cable (mm)	Suitable cable types	Main or connection cable dimensions (mm ²)	Branch cable dimensions (mm ²)
AVM 95 / 400	400	350	95	2,50	35 / 25	N(A)YY NA2XY N(A)YCWY	4 x 6 to 4 x 70 4 x 6 to 4 x 70 3 x 35/35 to 3 x 70/70	4 x 2,5 to 4 x 35 4 x 2,5 to 4 x 35 3 x 10/10 to 3 x 35/35
AVM 112 / 500	500	445	112	4,45	50 / 30	N(A)YY NA2XY N(A)YCWY N(A)KBA N(A)KLEY	4 x 70 to 4 x 150 4 x 70 to 4 x 150 3 x 70/70 to 3 x 150/150 4 x 35 to 4 x 120 3 x 70 to 3 x 120	4 x 16 to 4 x 50 4 x 16 to 4 x 50 3 x 25/25 to 3 x 50/50 4 x 25 to 4 x 35 3 x 25 to 3 x 35
AVM 125 / 610	610	540	125	6,45	58 / 35	N(A)YY NA2XY N(A)YCWY N(A)KBA N(A)KLEY	4 x 120 to 4 x 185 4 x 120 to 4 x 185 3 x 95/95 to 3 x 185/185 4 x 95 to 4 x 185 3 x 95 to 3 x 240	4 x 25 to 4 x 70 4 x 25 to 4 x 70 3 x 35/35 to 3 x 70/70 4 x 25 to 4 x 70 4 x 25 to 4 x 70
AVM 160 / 500	500	440	160	7,20	65 / 50	N(A)YY NA2XY N(A)YCWY N(A)KBA N(A)KLEY	4 x 50 to 4 x 240 4 x 50 to 4 x 240 3 x 120/120 to 3 x 185/185 4 x 120 to 4 x 185 3 x 120 to 3 x 240	2 x 4 x 35 to 4 x 150 2 x 4 x 35 to 4 x 150 3 x 70/70 to 3 x 120/120 4 x 35 to 4 x 120 4 x 35 to 4 x 120



SELECTION EXAMPLE

Cable data:

Cable 1 NAKLEY 3 x 150 mm²

Cable 2 NYY 4 x 150 mm²

Transition from paper to plastic cable

Suitable cable joint: AVM 125 / 610